

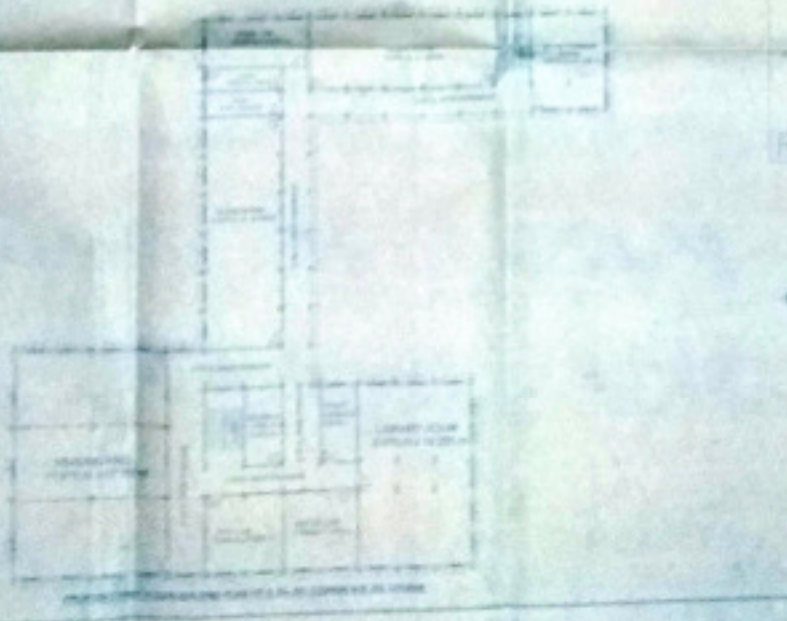
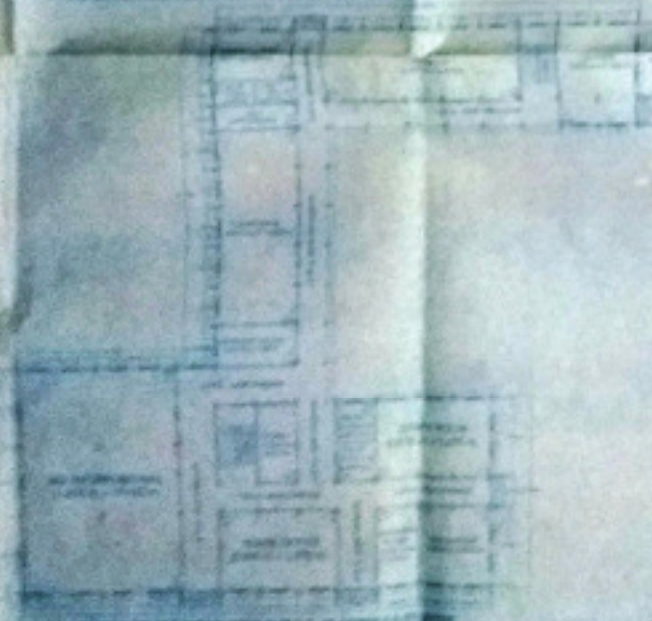
- SPECIFICATION :-**
1. To be constructed in accordance with the provisions of the Indian Standards Code of Practice for concrete and steel reinforcement.
 2. To be constructed in accordance with the provisions of the Indian Standards Code of Practice for concrete and steel reinforcement.
 3. To be constructed in accordance with the provisions of the Indian Standards Code of Practice for concrete and steel reinforcement.
 4. To be constructed in accordance with the provisions of the Indian Standards Code of Practice for concrete and steel reinforcement.
 5. To be constructed in accordance with the provisions of the Indian Standards Code of Practice for concrete and steel reinforcement.
 6. To be constructed in accordance with the provisions of the Indian Standards Code of Practice for concrete and steel reinforcement.
 7. To be constructed in accordance with the provisions of the Indian Standards Code of Practice for concrete and steel reinforcement.
 8. To be constructed in accordance with the provisions of the Indian Standards Code of Practice for concrete and steel reinforcement.
 9. To be constructed in accordance with the provisions of the Indian Standards Code of Practice for concrete and steel reinforcement.
 10. To be constructed in accordance with the provisions of the Indian Standards Code of Practice for concrete and steel reinforcement.

6 FLOOR BUILD UP AREA = 101.36 SQM = 1084.39 SQ. FT
 7 FLOOR BUILD UP AREA = 101.36 SQM = 1084.39 SQ. FT
 8 FLOOR BUILD UP AREA = 101.36 SQM = 1084.39 SQ. FT
 9 FLOOR BUILD UP AREA = 101.36 SQM = 1084.39 SQ. FT
TOTAL BUILD UP AREA = 405.44 SQM = 4357.56 SQ. FT

PROPOSED BUILDING CARPET AREA FOR B. ED & D. EL. ED COURSE

S. NO.	ROOM	CARPET AREA
1	START RAMP	10.13
2	REAR COURTYARD	10.13
3	REAR COURTYARD	10.13
4	REAR COURTYARD	10.13
5	REAR COURTYARD	10.13
6	REAR COURTYARD	10.13
7	REAR COURTYARD	10.13
8	REAR COURTYARD	10.13
9	REAR COURTYARD	10.13
10	REAR COURTYARD	10.13
11	REAR COURTYARD	10.13
12	REAR COURTYARD	10.13
13	REAR COURTYARD	10.13
14	REAR COURTYARD	10.13
15	REAR COURTYARD	10.13
16	REAR COURTYARD	10.13
17	REAR COURTYARD	10.13
18	REAR COURTYARD	10.13
19	REAR COURTYARD	10.13
20	REAR COURTYARD	10.13
21	REAR COURTYARD	10.13
22	REAR COURTYARD	10.13
23	REAR COURTYARD	10.13
24	REAR COURTYARD	10.13
25	REAR COURTYARD	10.13
26	REAR COURTYARD	10.13
27	REAR COURTYARD	10.13
28	REAR COURTYARD	10.13
29	REAR COURTYARD	10.13
30	REAR COURTYARD	10.13
31	REAR COURTYARD	10.13
32	REAR COURTYARD	10.13
33	REAR COURTYARD	10.13
34	REAR COURTYARD	10.13
35	REAR COURTYARD	10.13
36	REAR COURTYARD	10.13
37	REAR COURTYARD	10.13
38	REAR COURTYARD	10.13
39	REAR COURTYARD	10.13
40	REAR COURTYARD	10.13
41	REAR COURTYARD	10.13
42	REAR COURTYARD	10.13
43	REAR COURTYARD	10.13
44	REAR COURTYARD	10.13
45	REAR COURTYARD	10.13
46	REAR COURTYARD	10.13
47	REAR COURTYARD	10.13
48	REAR COURTYARD	10.13
49	REAR COURTYARD	10.13
50	REAR COURTYARD	10.13
51	REAR COURTYARD	10.13
52	REAR COURTYARD	10.13
53	REAR COURTYARD	10.13
54	REAR COURTYARD	10.13
55	REAR COURTYARD	10.13
56	REAR COURTYARD	10.13
57	REAR COURTYARD	10.13
58	REAR COURTYARD	10.13
59	REAR COURTYARD	10.13
60	REAR COURTYARD	10.13
61	REAR COURTYARD	10.13
62	REAR COURTYARD	10.13
63	REAR COURTYARD	10.13
64	REAR COURTYARD	10.13
65	REAR COURTYARD	10.13
66	REAR COURTYARD	10.13
67	REAR COURTYARD	10.13
68	REAR COURTYARD	10.13
69	REAR COURTYARD	10.13
70	REAR COURTYARD	10.13
71	REAR COURTYARD	10.13
72	REAR COURTYARD	10.13
73	REAR COURTYARD	10.13
74	REAR COURTYARD	10.13
75	REAR COURTYARD	10.13
76	REAR COURTYARD	10.13
77	REAR COURTYARD	10.13
78	REAR COURTYARD	10.13
79	REAR COURTYARD	10.13
80	REAR COURTYARD	10.13
81	REAR COURTYARD	10.13
82	REAR COURTYARD	10.13
83	REAR COURTYARD	10.13
84	REAR COURTYARD	10.13
85	REAR COURTYARD	10.13
86	REAR COURTYARD	10.13
87	REAR COURTYARD	10.13
88	REAR COURTYARD	10.13
89	REAR COURTYARD	10.13
90	REAR COURTYARD	10.13
91	REAR COURTYARD	10.13
92	REAR COURTYARD	10.13
93	REAR COURTYARD	10.13
94	REAR COURTYARD	10.13
95	REAR COURTYARD	10.13
96	REAR COURTYARD	10.13
97	REAR COURTYARD	10.13
98	REAR COURTYARD	10.13
99	REAR COURTYARD	10.13
100	REAR COURTYARD	10.13
TOTAL		405.44

TOTAL CARPET AREA = 381.44 SQM = 4094.96 SQ. FT
 TOTAL PLOT AREA = 3.56 ACRE = 1243.31 SQM = 13402.77 SQ. FT
 TOTAL BUILD UP AREA = 405.44 SQM = 4357.56 SQ. FT



DATE OF APPROVAL: _____

